

**TURY**

# PRODUCT CATALOG

---

VEHICLE ENHANCEMENT TECHNOLOGY - 2022



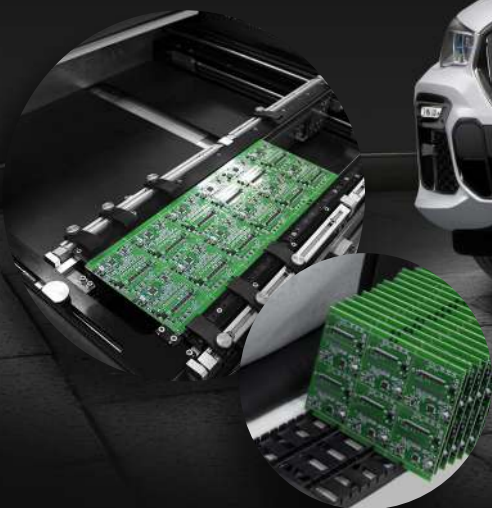
# ABOUT US

Tury is a Brazilian company established in 1990, located in Sao Paulo. With an area over 225.000 square feet and 200 direct employees, our factory is capable of producing more than 3 million units annually.

TURY is supplier of many different car makers in all around the world, providing different solution of electronic and wiring harness car accessories solution.



Our state of the art products are now sold in more than 30 different countries.





We offer an incredible variety of state of the art solutions for the automotive industry.

TURY is certified by ISO 9000, ISO 14000, IATF 16949 and ISO 4500. We follow rigorous quality control procedures, such as ESD, MSC, EMI, EMC and Metallography Tests.



Our R&D Center is one of the most advanced in Latin America, with numerous experienced engineers and a number of technology patents. Our philosophy is based on innovation and continuous improvement of our products and processes.



The management body is composed of highly capable people, who, in addition to having a lot of love and affection for the company, love what they do.

The company organizes and supports social projects for environmental sustainability in the region where it operates.

It is with this success story and with this infrastructure and sensational team, that we bring you the very best in automotive quality: TURY products!

Discover our incredible line of products, 100% developed and produced in Brazil and become our business partner.



# CONTENTS

## POWER WINDOWS - PRO LINE

02

General Features and Functions  
Electronic Features  
Programming Resources  
Photos and Dimensions

## REAR VIEW MIRRORS - PARK LINE

10

General Features and Functions  
Electronic Features  
Photos and Dimensions

## SUNROOF - SKY LINE

14

General Features and Functions  
Electronic Features  
Programming Resources  
Photos and Dimensions

## KEYLESS CAR ALARM - COMFORT LINE

19

General Features and Functions  
Electronic Features  
Programming Resources  
Photos and Dimensions

## ACCESSORIES - AC01/AC05/SONIC/LOCK

28

General Features and Functions

## TRAILER LIGHTING INTERFACE - CONNECT LINE

29

General Features and Functions  
Hitch Tester  
Photos and Dimensions

## PERFORMANCE - FAST LINE

33

General Features and Functions  
Electronic Features  
Photos and Dimensions

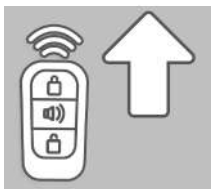
# UPGRADE - PRO LINE

## POWER WINDOWS



The Upgrade line of products from Tury has been in the market for over 20 years. With over 2 Millions units installed and 90 different units, Tury Upgrade brings you a state of the art solution that Tury guarantees. Seamlessly integrating into the power windows of many make and model vehicles, Tury Upgrade delivers a quality solution for you. Check below the functions and features of this Tury Upgrade product line.

## GENERAL FEATURES AND FUNCTIONS



### AUTO ROLL UP

Adds simultaneous "Auto Roll Up" functions of all power windows through the vehicles factory key fob or when integrated into an aftermarket alarm/remote start system.



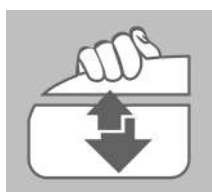
### AUTO ROLL DOWN

Adds simultaneous "Auto Roll Down" functions of all power windows through the vehicles factory key fob or when integrated into an aftermarket alarm/remote start system.



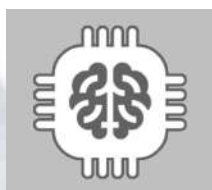
## ONE TOUCH

Converts the operation of the window switch(es). The original vehicle switch(es) that do not operate in automatic mode (one touch) will operate in one touch mode for "Auto Roll Up" and opening "Auto Roll Down" all vehicle power windows through all switches.



## ARS

Adds our patented Auto Reverse System (ARS) protection, also known as anti-pinch protection. This is to protect against accidents with power windows that do not have this function as original from the factory. The ARS technology used has technology patent and meets all the vehicle safety standards existing in the world such as FMVSS 118, CONTRAN 413/13, EEC 70/60 among others. TURY's ARS will be present in all auto roll up closing operations via factory key fob, aftermarket remote and original window switches.



## AUTO ADAPTIVE MODE

TURY's ARS safety technology acts in a self-adaptive way. Any changes in the power window system generated by ambient temperature, wear of the mechanical system of the windows or the drop in voltage of the vehicle's battery, are instantly understood by the TURY's ARS.



## FAIL MODE

For additional safety, if the ARS is activated during the closing of the windows by remote control, it will make up to 4 attempts to close the affected window. After this, in the last attempt, the glass will regress only 5mm (0.2 inches) from the ARS activation point, this keeping the windows closed as much as possible according to the safety standards.





## MANUAL MODE

For the full guarantee of the TURY's ARS, operation in manual closing mode will come into force in one of the windows when opening and/or closing maneuvers are performed for up to 10 times without being able to complete (fully open or fully closed). After the closing or complete opening of the windows occurs, the automatic closing (one-touch) will return to work.



## TIMER

Allows the factory power window switches to operate for 1 minute after the vehicle's ignition is turned off. This timer is reset for an additional minute after any touch of a power window switch then will after the last function.



## SAFETY

PRO equipment safety system guarantees that there is no unwanted automatic closing of the electric windows, when the internal door locking button is activated.



## NO BLOCK

PRO operation guarantees that no inconvenience occurs while the original passenger window-lock-button is activated and there is a command to close the windows by the remote control. All the power windows will close normally.



## DRIVER'S CONTROL

The technology used ensures that the driver blocks the movement of the passenger windows through a divergent command by the driver in relation to the one used by the passengers.



## OEM INTEGRATION



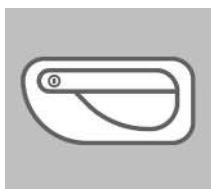
Adds all the new features mentioned above, without changing any original feature of the vehicle's power windows system.

## 24 VOLT



Also available for 24 volt vehicles.

## DOOR HANDLE



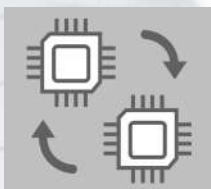
In some vehicles, the windows are closed using the electronic button on the driver's door handle.

## UPGRADE KIT



TURY's PRO Line can also be added to any aftermarket power window kit, providing all of the same features.

## REPAIR



Many PRO electronic units are capable of replacing original defective factory units.

See chart for available features and functions:

✓ - Available function    \* - Factory original function

	AUTO ROLL UP	AUTO ROLL DOWN	ONE TOUCH	ARS	AUTO ADAP.	FAIL MODE	MANUAL	TIMMER	SAFETY	NO-BLOCK	DRIVER'S CONTROL	OEM	24 VOLTS	DOOR HANDLE
PRO 2 (family)	✓	✓	✓	✓	✓	✓	✓	✓	✓	✓	✓	✓		
PRO 4 (family)	✓	✓	✓	✓	✓	✓	✓	✓	✓	✓	✓	✓		
TW 2 (family)	✓	✓	✓	✓	✓	✓	✓	✓		✓	✓	✓	✓	
COMFORT 1	✓		*	*	*	*			✓	*	*	✓		
PRO 1.0	✓		*	*	*	*			✓	*	*	✓		
PRO 1.3	✓		*	*	*	*			✓	*	*	✓		
PRO 1.4	✓		*	*	*	*			✓	*	*	✓		
PRO 1.15	✓		*	*	*	*			✓	*	*	✓		
PRO 3.0	✓		*	*	*	*			✓	*	*	✓		
PRO 3.2	✓		*	*	*	*			✓	*	*	✓		
PRO 3.4	✓		*	*	*	*			✓	*	*	✓		
PRO 3.5	✓		*	*	*	*			✓	*	*	✓		
OBD FORD	✓		*	*	*	*			✓	*	*	✓		
PARK 3	✓		*	*	*	*			✓	*	*	✓		
PARK 4	✓		*	*	*	*			✓	*	*	✓		
PARK 5	✓		*	*	*	*			✓	*	*	✓		
PARK 6	✓		*	*	*	*			✓	*	*	✓		
PARK 5.9	✓	✓	*	*	*	*			✓	*	*	✓		
PARK 6.9	✓	✓	*	*	*	*			✓	*	*	✓		
PARK 4.21	✓	✓	*	*	*	*			✓	*	*	✓		
PRO 1.5	✓	✓	*	*	*	*			✓	*	*	✓		
PRO 1.8	✓	✓	*	*	*	*			✓	*	*	✓		
PRO 1.11	✓	✓	*	*	*	*			✓	*	*	✓		
PRO 1.12	✓	✓	*	*	*	*			✓	*	*	✓		
PRO 1.17	✓	✓	*	*	*	*			✓	*	*	✓		
PRO 1.20	✓	✓	*	*	*	*			✓	*	*	✓		
PRO 1.1	✓		*	*	*	*			✓			✓		✓

## ELECTRONIC FEATURES

- 8-BIT and 32-BIT microprocessors;
- 3rd Generation Ripple Counter ARS technology with 6 operational amplifiers;
- Inputs and Outputs for reading and acting on: analog, power, resistive, LIN or CAN signals from the keys and engines of the power windows system;
- Led for programming and status feedback;
- Microkey and Jumpers for programming;
- Certified for EMI protection;
- EMC tested and approved.

## PROGRAMMING RESOURCES

Some TURY products for power windows automation have programming resources for their full operation or for the selection and customization of some functionalities.



- **PRO 2 / PRO 4** - Learning the electronic signals of power windows for the perfect functioning of TURY's ARS technology;
- **PRO 2 / PRO 4** - One-touch default setting: Short Mode or Long Mode;
- **PRO 2 / PRO 4 / PRO 1** - Definition of whether it will operate by the vehicle's original remote control or by remote control of installed alarms;
- **PRO 4.36** - Learning of the turn light signals;
- **PRO 1.0 / COMFORT** - Pulse time can be programmed to any different original power windows system;
- **PRO 1.0** - Selection of window signal: Analog or Resistive.

**PRO 1**


- Length: 2.08 inch / 5.3 cm
- Width: 1.37 inch / 3.5 cm
- Height: 1.02 inch / 2.6 cm
- Weight: 0.00 lb / 0.020 g

**PRO 2**


- Length: 2.75 inch / 7.0 cm
- Width: 2.63 inch / 6.7 cm
- Height: 1.06 inch / 2.7 cm
- Weight: 0.00 lb / 0.060 g

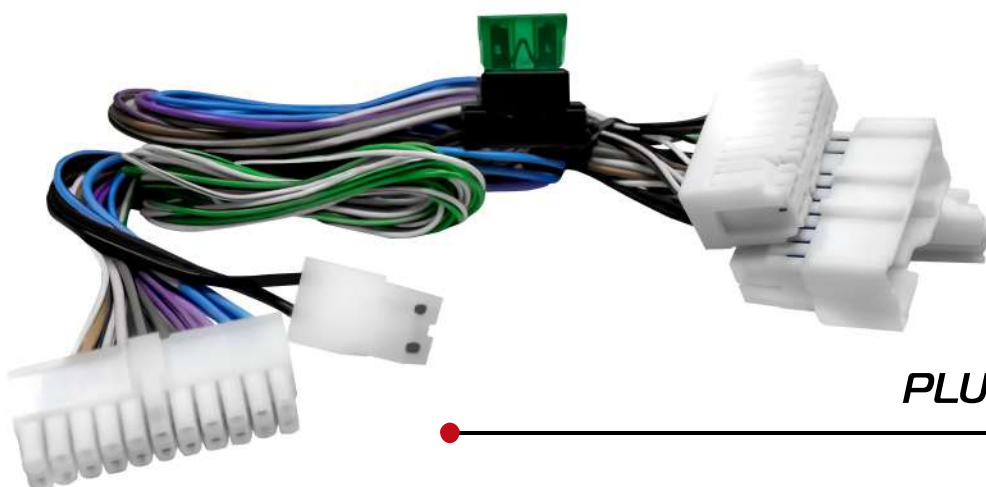
**PRO 3**


- Length: 1.90 inch / 4.85 cm
- Width: 0.99 inch / 2.53 cm
- Height: 0.98 inch / 2.5 cm
- Weight: 0.00 lb / 0.020 g

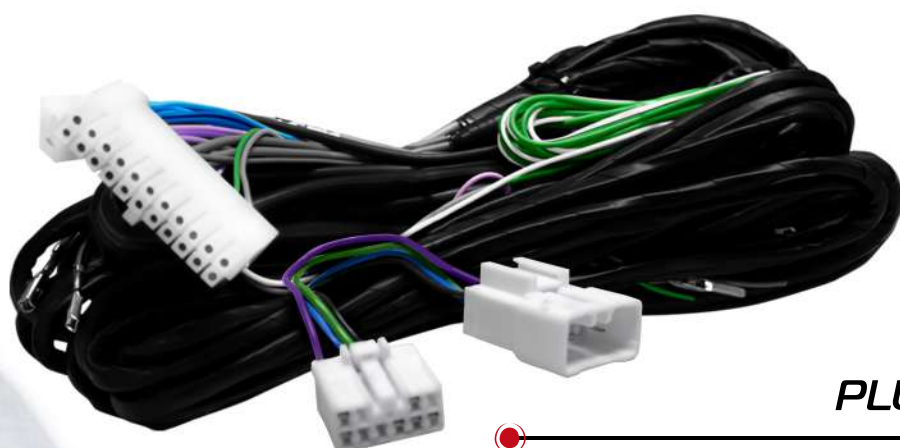
**PRO 4**


- Length: 4.25 inch / 10.8 cm
- Width: 3.11 inch / 7.9 cm
- Height: 1.10 inch / 2.8 cm
- Weight: 0.00 lb / 0.140 g

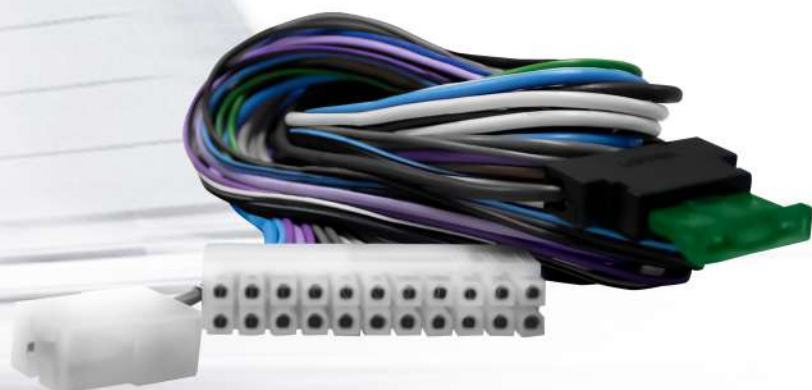




*PLUG AND PLAY*



*PLUG AND PLAY LONG*



*UNIVERSAL*

# UPGRADE - PARK LINE

## REAR VIEW MIRRORS



The Upgrade line for power mirror automation adds new functionality to the original factory power mirrors. Developed with maximum quality, the Park products are recognized in the professional market as the best and most complete solution for demanding customers. Check below the functions and features of this Tury Upgrade product line.

## GENERAL FEATURES AND FUNCTIONS



### TILT DOWN

Tilt-Down position can be adjusted anytime by the user, using the vehicle's original position control.



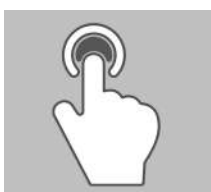
### AUTO FOLDING

Function that allows the user to fold and open the mirrors through the vehicle's original remote control or through installed alarm remote controls. It not only provides protection for the mirrors, but also improves space in tight parking spots. Available for vehicles with the original power folding mechanism.



## AUTO MODE

In Auto Mode the Tilt Down function will work whenever the reverse gear is engaged. To active this mode, the selector switch of the vehicle's side mirrors must always be positioned to the passenger side. The Park Line products are programmed by the factory to operate in Auto Mode.



## MANUAL MODE

In Manual Mode the Tilt Down function will only work when the driver touches the button to lower the side mirrors with the mirror selector switch positioned to the passenger's side.



## DELAY

Possibility to adjust the duration of the Tilt Down Function from 0 to 15 seconds. Park Line products are programmed by the factory to wait 3 seconds before returning to the original position.



## SUNROOF CLOSE

Adds vehicle sunroof closing function through vehicle's original remote or installed alarm/remote start remote controls.



## SUNROOF OPEN

Adds vehicle sunroof opening function through vehicle's original remote or installed alarm/remote start remote controls.



## ROLL UP

Adds simultaneous "Auto Roll Up" functions of all power windows through the vehicles factory key fob or when integrated into an aftermarket alarm/remote start system.



## ROLL DOWN

Adds simultaneous "Auto Roll Down" functions of all power windows through the vehicles factory key fob or when integrated into an aftermarket alarm/remote start system.

See chart for available features and functions:

✓ - Available function

	TILT DOWN	AUTO FOLDING	AUTO MODE	MANUAL MODE	DELAY	ROLL UP	ROLL DOWN	SUNROOF CLOSE	SUNROOF OPEN
PARK 1		✓	✓	✓	✓				
PARK 2	✓								
PARK 3	✓	✓	✓	✓	✓				
PARK 4		✓	✓	✓	✓	✓			
PARK 4.21	✓					✓	✓		
PARK 5	✓	✓	✓	✓	✓	✓			
PARK 5.9	✓	✓	✓	✓	✓	✓	✓		
PARK 6	✓	✓	✓	✓	✓	✓		✓	
PARK 6.9	✓	✓	✓	✓	✓	✓	✓	✓	✓



## ELECTRONIC FEATURES

- 8-BIT and 32-BIT microprocessors;
- Power Mos for auto folding;
- Led for programming and status feedback;
- Microkey and Jumpers for programming;
- Certified for EMI protection;
- EMC tested and approved.

### PARK 1/2



- Length: 2.08 inch / 5.3 cm
- Width: 1.37 inch / 3.5 cm
- Height: 1.02 inch / 2.6 cm
- Weight: 0.00 lb / 0.020 g

### PARK 2/3/4/5/6



- Length: 2.75 inch / 7.0 cm
- Width: 2.63 inch / 6.7 cm
- Height: 1.06 inch / 2.7 cm
- Weight: 0.00 lb / 0.060 g

### GENERAL PLUG AND PLAY



### UNIVERSAL



# UPGRADE - SKY LINE

## SUNROOF



The Upgrade line for sunroof adds new functionality to the original factory sunroof and interior lining. Developed with maximum quality, the Sky products are recognized in the professional market as the best and most complete solution for demanding customers. Check below the functions and features of this Tury Upgrade product line.

## GENERAL FEATURES AND FUNCTIONS



### SUNROOF CLOSE

Adds vehicle sunroof closing function through vehicle's original remote or installed alarm/remote start remote controls.



### SUNROOF OPEN

Adds vehicle sunroof opening function through vehicle's original remote or installed alarm/remote start remote controls.

## ONE TOUCH



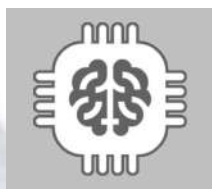
Converts the operation of the sunroof switch(es). The original vehicle switch(es) that do not operate in automatic mode (one touch) will operate in one-touch mode for closing and opening the sunroof and inner lining curtain.

## ARS



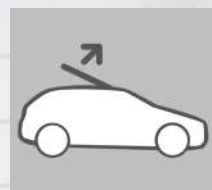
Adds our Patented Auto Reverse System (ARS) protection, also known as anti-pinch protection. This is to protect against accidents on sunroofs and the interior lining that do not have this function as original from the factory. The ARS technology used has technology patent and meets all the vehicle safety standards existing in the world such as FMVSS 118, CONTRAN 413/13, EEC 70/60 among others. TURY's ARS will be present in all auto roll up closing operations via factory key fob, aftermarket remote and original sunroof switches.

## AUTO ADAPTIVE MODE



TURY's ARS safety technology acts in a self-adaptive way. Any changes in the sunroof system generated by ambient temperature, wear of the mechanical system of the windows or the drop in voltage of the vehicle's battery, are instantly understood by the TURY's ARS.

## VENTILATION MODE



Remotely open the sunroof on the ventilation position to let the hot air leave the vehicle.

See chart for available features and functions:

✓ - Available function

	SUNROOF CLOSE	SUNROOF OPEN	ONE TOUCH	ARS	AUTO ADAPTIVE	VENTILATION MODE
SKY 1	✓					
SKY 2	✓	✓				
SKY 2T	✓	✓	✓	✓	✓	✓

## ELECTRONIC FEATURES

- 8-BIT and 32-BIT microprocessors;
- 3rd Generation Ripple Counter ARS technology with 6 operational amplifiers;
- Inputs and Outputs for reading and acting on: analog, power, resistive, LIN or CAN signals from the keys and engines of the power windows system;
- Led for programming and status feedback;
- Microkey and Jumpers for programming;
- Certified for EMI protection;
- EMC tested and approved.



## PROGRAMMING RESOURCES

Some TURY products for power windows automation have programming resources for their full operation or for the selection and customization of some functionalities.



- **SKY 2T** - Learning the electronic signals of power windows for the perfect functioning of TURY's ARS technology;
- **SKY 2T** - One-touch default setting: Short Mode or Long Mode;
- **ALL** - Definition of whether it will operate by the vehicle's original remote control or by remote control of installed alarms;
- **SKY 1 / SKY 2** - Pulse time can be programmed to any different original power windows system;
- **SKY 1 / SKY 2** - Selection of window signal: Analog or Resistive.

SKY 1.0



- Length: 2.08 inch / 5.3 cm
- Width: 1.37 inch / 3.5 cm
- Height: 1.02 inch / 2.6 cm
- Weight: 0.00 lb / 0.020 g

SKY 2T



- Length: 2.75 inch / 7.0 cm
- Width: 2.63 inch / 6.7 cm
- Height: 1.05 inch / 2.7 cm
- Weight: 0.00 lb / 0.060 g

SKY 1.16 / 1.9



- Length: 1.3 inch / 3.3 cm
- Width: 0.90 inch / 2.3 cm
- Height: 0.39 inch / 1.0 cm
- Weight: 0.00 lb / 0.005 g

GENERAL PLUG AND PLAY



UNIVERSAL



# UPGRADE - COMFORT LINE

## KEYLESS CAR ALARM



The Upgrade line of products from Tury has been in the market for over 20 years. With over 2 Millions units installed and 90 different units, Tury Upgrade brings you a state of the art solution that Tury guarantees. Our Keyless Car Alarm systems offer the best vehicle security solutions, while adding up to 27 new features. Check below the functions and features of this Tury Upgrade product line.

## GENERAL FEATURES AND FUNCTIONS



### KEYLESS

All operation is done using the factory key fob, without the need of any additional remote control.



### MOVEMENT SENSOR

Detects sudden movements in the vehicle, such as the car being towed for example. It has 7 different levels of adjustment.



### GLASS BREAKING SENSOR

Detects any movement inside the vehicle 20 seconds after activation. It has 4 different levels of adjustment.



### TILT SENSOR

Detects any inclination of vehicle, such as wheel theft for example. It has 7 different levels of adjustment.



### PROXIMITY SENSOR

Detects any opening of the doors, hood or trunk after 20 seconds of activation.



### SMART FEEDBACK

You have the option to select siren beep and/or turn light signals to confirm the activation/deactivation of the alarm system.



### SMART BLOCK

Our patent pending Smart Block technology blocks the vehicle's fuel pump in case of any possible theft attempts.



## SECRET SWITCH

Optional switch to deactivate the alarm without the use of the factory key fob.



## ANTI THEFT

Just enabled if the smart block is installed. Starts monitoring after 10 seconds of ignition activation. After this time, if the door is opened and closed with the ignition on, the first movement of the vehicle starts a 20-second countdown, after this time the siren is activated and the LED monitor will flash. If the vehicle stops and remains stationary for more than 10 seconds it will be locked. This function is originally disabled and can be enabled by programming.



## VALET FUNCTION

Just enabled if the smart block is installed. Allows you to disable the smart block and anti-theft system, avoiding revealing access to the secret switch to third parties.



## ESS SYSTEMS

Possibility of adding emergency safety alert to your vehicle. In cases of sudden use of the breaks, the turn light signals will flash 8 times to warn other drivers. It has 7 different levels of adjustment.



## SAFETY

Protection that guarantees that the deactivation of the COMFORT alarm will only be carried out through the vehicle's original remote control, avoiding false deactivation attempts by thieves. It has different modes of operation.





### AUTO ACTIVATION

Smart function for protection against theft by blocking the factory key fob signal. If alarm is not activated after turning off the vehicle and closing the doors in 20 seconds, the alarm system will activate automatically.



### SMART FEEDBACK

With our TURY PROG you can check the last 5 triggers in your alarm system.



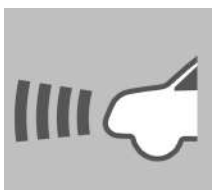
### SPEED LOCK

Automatically locks the vehicle's doors after achieving certain speed.



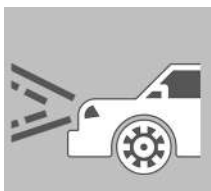
### DOORS ALERT

If any door is opened with the vehicle in motion, you will hear an alert that is programmable.



### FOLLOW ME

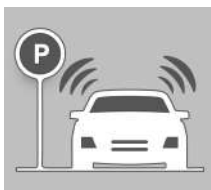
Activates the headlights and taillights for 45 seconds through the factory key fob.



## AUTO LIGHTS

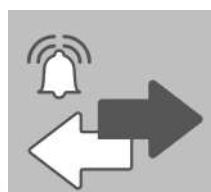
Automatic activation of the headlights and taillights with 3 different modes:

1. **Auto (Default):** Activates after the vehicle starts moving.
2. **Twilight Sensor:** Activated in the absence of ambient light with sensitivity adjustment.
3. **Audible Warning:** Sound alarm to remind the driver to turn on the headlights.



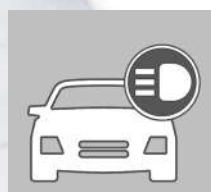
## PANIC LOCATOR

Activates the siren and lights of the vehicle through the factory key fob to assist locating the vehicle in parking lots.



## TURN SIDE ALERT

Sound alert to inform that the turn side indicators are activated for more than 1 minute.



## LIGHT ALERT

Sound alert to inform that the headlights are still on after the vehicle is turned off. Can also be programmed to activate only when driver door is opened.



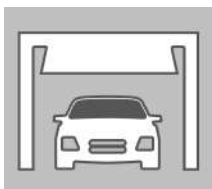
## AUTO UNLOCK

Optional feature to automatically unlock the doors when vehicle is turned off.



### ROLL UP

Adds simultaneous closing function of all power windows through the vehicles factory key fob or when integrated into an aftermarket alarm/remote start system. Available for vehicles equipped with original one touch and original ARS in all windows.



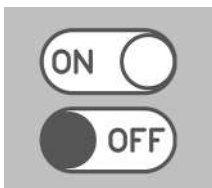
### GATE OPENING

Auxiliary output in the system to allow opening of any automatic gates, using the vehicle's high beam light.



### AUTO OFF MEDIA

Possibility to automatically turn off the head unit after turning off the ignition. This can be programmed to turn off after 30 or 60 minutes. Allows you to listen to music, for example, even with the ignition turned off.



### BATTERY SAVING MODE

Completely turn off the alarm when traveling or scheduled maintenance to prevent any unwanted battery consumption.

## ELECTRONIC FEATURES

- 32-Bit ARM Microprocessor;
- Smart Block with TURY's patent pending;
- Panasonic relays for turn light signals and fuel pump block ;
- High Side Drives for headlights and taillights;
- Buzzer built in for audible warnings;
- Built in protection fuse.

## PROGRAMMING RESOURCES

All functions present in COMFORT can also be activated, deactivated and have the sensor sensitivities adjusted through the Master Key, Ultrasound and TURYPROG, an easy-to-use software for any type of computer. Through the TURYPROG, it is also possible to save schedules and identify the reason for the last 5 alerts that occurred. To use TURYPROG it is necessary to use TURY's serial interface tool, which is sold separately.



### Alarm Central



- Length: 2.75 inch / 7.0 cm
- Width: 2.63 inch / 6.7 cm
- Height: 1.05 inch / 2.7 cm
- Weight: 0.00 lb / 0.060 g

### Anti Theft Central



- Length: 2.08 inch / 5.3 cm
- Width: 1.37 inch / 3.5 cm
- Height: 1.02 inch / 2.6 cm
- Weight: 0.00 lb / 0.020 g

### Master Key



- Length: 1.35 inch / 3.45 cm
- Width: 0.90 inch / 2.3 cm
- Height: 0.39 inch / 1.0 cm
- Weight: 0.00 lb / 0.005 g

### Siren Sound Alarm



- Length: 1.8 inch / 4.6 cm
- Width: 2.75 inch / 7.0 cm
- Diameter: 1.9 inch / 5.0 cm
- Weight: 0.00 lb / 0.60 g

### Ultrasound (Twilight Sensor)



- Length: 1.37 inch / 3.5 cm
- Width: 0.78 inch / 2.0 cm
- Height: 0.78 inch / 2.0 cm
- Weight: 0.00 lb / 0.005 g

### Ultrasound

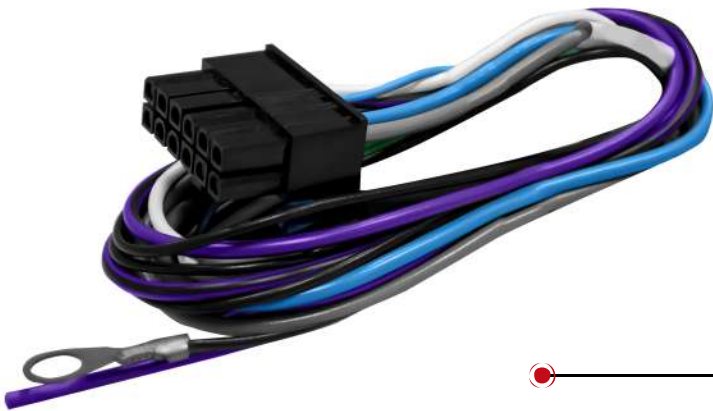


- Length: 0.98 inch / 2.5 cm
- Width: 0.78 inch / 2.0 cm
- Height: 0.78 inch / 2.0 cm
- Weight: 0.00 lb / 0.005 g





PLUG AND PLAY



UNIVERSAL

See chart for available components in each module:

✓ - Available

	ULTRASOUND (TWILIGHT SENSOR)	PLUG AND PLAY HARNESS	UNIVERSAL HARNESS	MASTER KEY (TWILIGHT SENSOR)	ANTI THEFT CENTRAL	ALARM CENTRAL	SIREN SOUND ALARM
COMFORT 1.1 (Plug and Play)	✓	✓				✓	✓
COMFORT 1.3 (Plug and Play)		✓		✓		✓	✓
COMFORT 1.1 (Universal)	✓		✓	✓		✓	✓
COMFORT 1.2 (Universal)	✓		✓		✓	✓	✓
COMFORT 1.3 (Universal)			✓	✓		✓	✓
COMFORT 1.4 (Universal)			✓	✓	✓	✓	✓

# UPGRADE

## ACCESSORIES

All this accessories work together with our COMFORT module and are sold separately:

### **SONIC** - Car Alarm with Ultrasound Sensor

**Glass Breaking Sensor:** Detects any movement inside the vehicle 20 seconds after activation. It has 4 different levels of adjustment.

### **AC05** - Lighting System Automation

Automatic turn on of headlights and lights after 3 seconds of starting the engine + programmable system.

- Audible warning to prevent leaving the vehicle with the headlight on;
- Follow me: Activates the headlights and taillights for 45 seconds with the ignition key off.

### **AC01** - Automatic Audio System Turn Off

- Adds the possibility to turn off the headunit via remote control;
  - Automatically turns off the radio on alarm activation or after 30 minutes with ignition off.
- Turns the radio back on or resets the timer if the door opens or closes.

### **LOCK** - Automatic Door Lock System

- Allows the 4 doors to be locked/unlocked through the remote alarm control;
- Fully adjustable with different sensitivity levels;
- Will trigger the alarm in case of sudden movement such as theft by tow truck;
- Will trigger the alarm in case of sudden inclination movement such as wheel theft.

# CONNECT LINE

## TRAILER LIGHTING INTERFACE



The CONNECT Line is the ideal and most complete trailer lighting interface in the market. With an incredible variety of options this line also includes our IP68 rated modules for application that require underwater submersion. Check below the functions and features of this TURY product line.

## GENERAL FEATURES AND FUNCTIONS



### CHANNELS

It supplies 5 different output channels to the trailer: Brake lights, Right and Left turn side indicators, Taillights and Reverse Lights. Give the outputs accordance USA standards or European Standards.



### SMART MODULE

Our module works with all modern vehicle technologies such as PMW signals with LIN or CAN monitoring.



### IP68

Our truck models have IP68 water protection that guarantees perfect operation even when submerged under water.



### OEM INTEGRATION

Stabilizes the vehicle's voltage when a trailer is connected, preventing the activation of any warning lights.



### REVERSE POLARITY PROTECTION

Internal reverse polarity protection for ultimate protection of your vehicle electrical system.



### THERMAL PROTECTION

All our modules have an advanced thermal protection circuitry to prevent overheating.



### 12V SUPPLY

It has an independent 12-volt power supply. This way it does not affect the vehicle's original current, preventing overloads, blown fuse or original BCM or overheating of the vehicle's original electrical wiring.

See chart for available features and functions:

✓ - Available function

	CHANNELS	PMW	IP68	OEM INTEGRATION	SHORT CIRCUIT	THERMAL PROTECTION	12V SUPPLY
CONNECT 4.1.0	4			✓	✓	✓	✓
CONNECT 5.1.0	5			✓	✓	✓	✓
CONNECT 5.1.1	5			✓	✓	✓	✓
CONNECT 5.2.0	5	✓		✓	✓	✓	✓
CONNECT 5.2.1	5	✓		✓	✓	✓	✓
CONNECT 6.2.0	6	✓		✓	✓	✓	✓
CONNECT IP 4.1.0	4		✓	✓	✓	✓	✓
CONNECT IP 5.1.0	5		✓	✓	✓	✓	✓
CONNECT IP 5.1.1	5		✓	✓	✓	✓	✓
CONNECT IP 5.2.0	5	✓	✓	✓	✓	✓	✓
CONNECT IP 5.2.1	5	✓	✓	✓	✓	✓	✓
CONNECT IP 6.2.0	6	✓	✓	✓	✓	✓	✓

## HITCH TESTER

We have developed equipment that facilitates the operation verification of the trailer lighting system in vehicles. This equipment meets both the European standard (ISO 1724) and the North American standard. For the application of the North American standard, the equipment is supplied together with the adapters of the different sockets used, with 4, 6, 5 and 7 ways and a 6 meter extension cable so that a single installer can carry out all the tests on his own.





Hitch Tester



- Length: 0.76 inch / 1.95 cm
- Width: 2.16 inch / 5.5 cm
- Height: 1.7 inch / 4.3 cm
- Weight: 0.28 lb / 130 g

CONNECT Central



- Length: 2.7 inch / 6.9 cm
- Width: 2.7 inch / 6.9 cm
- Height: 1.3 inch / 3.3 cm
- Weight: 0.00 lb / 0.070 g



UNIVERSAL



PLUG AND PLAY

# FAST LINE

## PERFORMANCE



The FAST Line is an easy-to-install module that improves throttle response and also functions as a safety device. Through 35 modes of driving, the driver has access to an instant and safe acceleration, taking advantage of the best performance the vehicle has to offer. Check below the functions and features of this TURY product line.

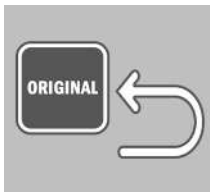
## GENERAL FEATURES AND FUNCTIONS

### MAPS



Adds 4 new acceleration maps, each with 9 levels of adjustment. In this way, the driver will have at their disposal how to adjust the vehicle's ideal acceleration response characteristics, removing the response delay from the vehicle. The different maps and their 9 levels guarantee perfect customization for each different driver profile and also for different needs, such as urban areas, highways, trips with a loaded vehicle, hills and other situations. FAST is a unique product that will change the lives of all drivers.

## ORIGINAL MODE



At any time, the driver can deactivate FAST, returning the vehicle to the original acceleration profile. This can be done by the TURY app or by the Fast controller panel (sold separately).

## LOCK



Security function to lock the accelerator pedal electronically. This is an advanced anti-theft mode or for parents who do not want their children to drive without permission. With the LOCK function activated, the vehicle will not move, unless is towed.

## PARKING



Our Valet Mode that limits the vehicle acceleration. This is used when car is left at valet parking or any other location where you would like to limit the vehicle acceleration.

## TURY APP



Ability to control all the features of the FAST Line. Our Tury APP is available in 3 languages, for IOS and Android and uses Bluetooth 5.0 to seamlessly communicate with the FAST module. It allows encrypted pairing of up to 4 devices.

## VEHICLE TYPES



FAST can be used in any vehicle with electronic throttle pedal (manual or automatic), and also for any type of combustion engine.

## FAST TEST DRIVE KIT



Our FAST Test Drive Kit is the ultimate solution for dealers that would like to offer a quick test drive for its customers. In this kit you will receive not only the FAST module but a variety of harnesses to be able to install instantly in any type of vehicle.

### FAST Central



- Length: 2.08 inch / 5.3 cm
- Width: 1.37 inch / 3.5 cm
- Height: 1.02 inch / 2.6 cm
- Weight: 0.00 lb / 0.020 g

### FAST Panel



- Length: 2.7 inch / 6.9 cm
- Width: 2.7 inch / 6.9 cm
- Height: 1.3 inch / 3.3 cm
- Weight: 0.0 lb / 0.0 g

## TURY APP



# TURY

[WWW.TURY.COM.BR](http://WWW.TURY.COM.BR)

